

ST. PETER'S
UNITED CHURCH
OF CHRIST

20 EAST FIFTH ST.
WASHINGTON, MO

636-239-6176
office@stpeters-ucc.org

Pastor Paul
Cell: 636-221-7065
Home: 636-390-2783
Email:
pastorpaul@stpeters-ucc.org

Pastor Leah
Cell and email provided in
bulletin or contact via
website

Messenger and Website:
Laura Placht
Email: lplacht@fidnet.com
Website:
stpeters-washington.org

Inside this issue:

Journeyman Study 2
Begins

Fifth Annual Stew 2
Supper

Mardi Gras 2
Celebration

Adult-High School 5
Class

Lenten Bible 9
Study

Camp Schedule 10

Easter Lily Order 11
Form

St. Peter's Messenger

Editor: Laura Placht

March 2011

Pastor Paul's Points

I thought our Leadership and Ministry Teams meeting held January 25 was a success. Our turnout was much better than in recent years and more importantly, I overheard a great deal of excitement emitting from several of the teams' tables. I have also participated in quite a few new ministry team meetings and gatherings – all great.

Firstly, Big Idea/Think Tank Team participants are involved in our St. Peter's House Task Force which met Jan. 25 also. This opportunity arose when Developmental Services of Franklin County moved the residents of the group home to a new location. After investigation, it was determined that neither Emmaus nor Developmental Services would be interested in using our home again. (Two stories are difficult for aging clients.) With our parsonage now vacant, this discussion was very inspiring about new possible Caring ministry directions for St. Peter's UCC. Vital hands-on opportunities for our caring congregation that could shape us for years to come are among options. A follow up meeting with community leaders took place Feb. 15 to explore ministry/funding options.

Secondly, *Worship 150*, the Altar, Banners, Flowers & Decorations and Technology Teams met jointly on February 6. We shared some introductions and turned most of the conversation to discussions on Lent, which begins soon, March 9 on Ash Wednesday. A moving multimedia service anchored by Henryk Gorecki's "Sorrowful Songs" will take place at 6:00. (The council opted for an earlier service time to help people who don't drive at night – daylight savings time is almost here!) There were many productive observations, affirmations and suggestions on our overall ways of worship. We made assignments and will continue discussions. Our six weeks of Sunday Lenten services will follow the six days of Creation, as the lectionary provides. Easter Sunday, of course, is the seventh week/seventh day – Sabbath rest and celebration!

Thirdly, Journeyman weekly discussions have resumed with my great encouragement for men of St. Peter's to participate in our men's retreat April 15-17 at Shannondale Mission.

Hands-on/heavy-duty service projects, fellowship and worship in the Ozarks are three primary components. All three are important in building strong Christian men at home and at church. Journeyman resumes March 16 from 6:00-7:30 with a new study of Henri Nouwen's *Return of the Prodigal Son*. Participants will find it highly insightful and personal.

Marsha Jones, our student minister, is beginning her spring semester with us. I have found her mission education ministry endeavors last fall rewarding for St. Peter's and a great help to me. Participants in our Wednesday ministries will have gotten to know her and especially appreciate her ministry gifts. Marsha will be here every Sunday as her schedule now dictates. She is on a non-ordained justice ministry track; her goals for this semester include being comfortable in leading elements of worship, as she may be professionally called-upon to do so. A consistent niche will be her giving our offertory invitations to help us "Connect the Dots" between providing mission and service with spiritual growth and development. I salute our congregation for our investment in nurturing future ministers. I am pleased the council has reaffirmed the value and reception of contextual education students from Eden and wants to continue doing so.

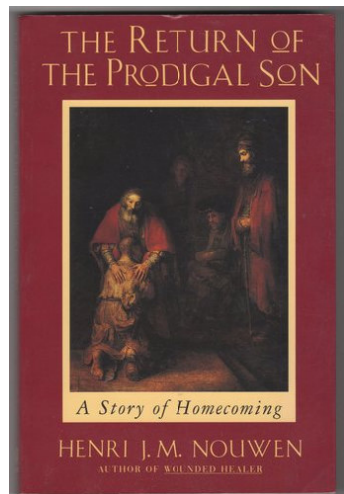
Professionally, I continue to convene the Washington Area Clergy Community Cooperative (formerly known as Ministerial Alliance). Our next project is working with Capt. Ed Menefee in providing chaplains to our police department. I have been working with Care & Counseling of St. Louis to fill the void left by no licensed counselor operating out of our church. Their response is the establishment of a "Mental Health 101" clergy roundtable model to better equip parish pastors in clinical counseling approaches toward our proper extent. Initial meetings will be held here.

It cannot be emphasized enough that Lent is a Journey. Ministry activities are destinations that contribute to our destiny of walking with our Savior. Let us walk the journey together.

Pastor Koch

Weds@St.Pete's Journeymen - March 16

Journeymen's new study beginning March 16 at 6:15 will be *The Return of the Prodigal Son* by Henri Nouwen. (Pastor Paul has recommended this book to a few others in the past and they have thanked him eternally.) It not only references Jesus' parable in Luke 15, but also Rembrandt's painting of it, Rembrandt's own life, and intertwining reactions from Nouwen's life. There will be plenty of space for the groups reactions too. Please let Pastor Paul know if he may reserve a copy for you or answer questions. Journeymen is an ecumenical men's group open to all.



Fifth Annual Stew Supper

The Fifth Annual Stew Supper will be held Friday, March 4, from 11-7 in the dining room. Proceeds will benefit the Atrium Fund. Our "famous" stew will be served with slaw, bread, and delicious homemade dessert. Both "dine in" and "carry out" will be available. The following are ways the congregation can be of help: lend an electric skillet or an electric roaster for cooking stew meat on Wednesday, March 2,; bake a dessert (preferably a homemade pie); help with serving and cleanup on Friday, (shifts are 11-2, 2-5, and 5-8). If you can help in any of these ways, please contact Byron Stolte at 239-3264. Tickets will be sold before and after worship services or in the church office - adults \$8, children (3-12) \$4.

Atrium Gallery Hosts New Exhibit for Lent

The first exhibit in our new gallery features a series of paintings and illustrations fitting for the Lenten season. The public is invited to tour selected works of Travis Molitor during worship times and church office hours.

Travis Molitor is a freelance illustrator and fine artist. He grew up in St. Clair, Missouri, where he graduated from high school in 2005. After high school he attended East Central College where he received an Associates of Arts in Fine Art and was named 2006-07 Student of the Year. He then transferred to Webster University where he earned his Bachelor of Fine Arts in Drawing in 2009. Also during his time at Webster he met his future wife, Jennifer, who helped him get closer to his faith. The artwork at St. Peter's United Church of Christ is his attempt to pay homage to his new spirituality and to reflect on how God can make anything possible.

Mardi Gras Celebration

Mardi Gras will be held March 6. Everyone is invited to participate in the annual Mardi Gras celebration after the 10:00 church service on Sunday, March 6. There will be games and prizes, a food stand sponsored by the youth for everyone to have lunch, a cake/bake walk, and a themed basket silent auction. There is something for all ages, so come and enjoy. There is a sign-up sheet in the atrium if you are interested in donating a themed basket or individual items for a basket and cakes or other desserts for the bake walk. Items may be brought to the church office. Thank you.

The Board of Christian Education

Historical Ministry Team

The Historical Ministry Team met on February 8 with Rev. Bill Schwab and started to sort through old scrap books and photos to organize them and get a selection to change the display case. They will meet again at 2 p.m. on March 15 in the atrium room. If more members would like to attend, they are more than welcome. We are also looking for additional past photos, announcements, memorabilia that any members may have. We can also make a copy so that they can retain the original. Feel free to drop any thing of interest at the church office before our next meeting. Make sure it is clearly labeled and if possible the date.

Tom Howard

Camp Mo-Val Camping Information From the Conference Office

It is with much joy that we announce the 2011 schedule of Outdoor Ministry camping programs for the Missouri Mid-South Conference UCC. Much will be familiar in this year's schedule, yet there are subtle changes. This year the Camp Fees INCLUDE camp photos and t-shirts for everyone. The 'look' of the materials is much different, with much thanks to Leslie Heberlie in the Conference Office! We have added a second Adventures in Community in August to expand our ministry with adults with special needs. We are collaborating with Shannondale Community Center to expand the reach of the summer program possibilities there. And there is all that is 'familiar' for everyone who comes to camp at Camp Mo-Val!!

Especially exciting is our theme for camp this year: **Got Spirit? Finding God in the Everyday**. What a great way to express the "spirit" of a week at camp

Someone has described "Spirituality" as being 'our desire for God,' our longing to find God, to know God, to be in relationship with God, as individuals and as the people of God. More than 1600 years ago, Saint Augustine of Hippo was convinced that our deepest human longing was to find God, praying "our hearts find no peace until they rest in you." Indeed, our 'desire for God' ... our search for God ... can feel like a restless wandering or a deep hunger for the presence of God's Spirit in our lives. We might look for God in nature, in our hearts and minds, in our relationships, in the world 'out there', in the community around us ... and in ways that are more hurtful than helpful.

In the Bible we find this 'longing for God' expressed in sto-

ries, songs, prayers, encounters and wisdom. Through them we learn of a powerful God, a mysterious presence throughout life, who, in fact, longs to be in covenant relationship with us. Someone else has described God's "Will" as God's 'yearning' for us ... yearning for us to find God. "Spirituality," then, is not only our desire for God, but God's desire for us, as well.

Scripture also affirms that God is present all around us. Wherever God's people look, God is present, yearning to be found. We believe God is most fully revealed in the person of Jesus Christ, and that God continues to open our eyes and invite us to 'find God' through the Holy Spirit, present in our everyday lives.

In "Got Spirit?" we will examine several biblical passages to help us explore different ways God is present for us to find in our 'everyday lives': In the wonder of creation; in moments of gratitude; in hospitality to the stranger; in expression of generosity; in worship; and in living in Christ's love. Our God 'yearns' for us ... even as we yearn for God ... and takes great delight in being found, in the Everyday of our lives.

We look forward to a great summer camping season, looking for God's presence in OUR everyday lives!! "Got Spirit?" Come and See!!

Offered by Interim Director of Outdoor Ministries Rev. Don Bizer (See the schedule on page 10 and on the website under the Camp MoVal tab of the section entitled, "What We Do").

Cemetery Board Meeting

The Cemetery Board met on January 25 with the following members present: Mike Carey, Hank Anderson, Dennis Borgman, Billy Howard, Chuck Patterson, Byron Stolte - Sexton, and Roger Fleer - Council Rep. Absent: Alvin Gerling.

The December minutes and Treasurer's reports were read and approved.

Old Business: Byron has purchased a new sweeper to be used at the Committal Building. Rebar was delivered and will be cut into pieces.

New Business: A motion was made and seconded to donate \$2,000 to the Atrium Fund.

The next meeting will be on March 1 at 7 p.m.

Submitted by,

Billy Howard

Women's Fellowship News

Please sign up to help with the Atrium Coffee Hour which follows each Sunday service. Sign up commitment is for baking, set up/clean up , or serving on whichever Sunday you choose, however you wish to help. See Donna Mueller (239-2177) or check at the table in the Atrium each Sunday for more information and a sign up list. Thanks - Hospitality Ministry Team

The Women's Fellowship next meeting will be on March 10 at 10 a.m. After the meeting Rev. Koch will show the movie, *Constellation*, and lead a discussion on his experience with the film in the Deep South. We will be having a pizza luncheon.

The Women's Breakfast at Cowan's will be on March 17 at 9 a.m.

It is that time again to go through the closets and set aside those things you don't need or want anymore and donate them to our Rum-

mage sale. Watch for further announcements in the church's weekly bulletin.

The Women's Fellowship will welcome any newcomers if you are interested. Join us for a morning of fellowship and devotion and a good luncheon. We have a variety of programs scheduled throughout the year and a good time is had by all. So come and join us for a meeting to see if you would be interested in what we have to offer.

Cheryl Keller
Women's Fellowship Secretary

Women's Fellowship Schedule of Events

March 10	Rev. Koch	Constellation	Pizza
March 17	Women's Breakfast at Cowan's		9 a.m.
April 14	Rummage Sale	4-7	
April 15	Rummage Sale	8-4	
April 16	Rummage Sale	8-12	
April 21	Women's Breakfast at Cowan's		9 a.m.
	10 Women's Fellowship Meeting		Lenten Services
May 12	Hillermann's Flower Arranging		pot luck
May 19	Women's Breakfast at Cowan's		9 a.m.
June 9	Park Bingo	Breakfast at 9 a.m.	
June 16	Women's Breakfast at Cowan's		9 a.m.
June 23	Holstein		
July	no meeting		
July 21	Women's Breakfast at Cowan's		9 a.m.
August	no meeting		
August 18	Women's Breakfast at Cowan's		9 a.m.
September 8	Bible Study with Reverend Leah		Salad Luncheon
September 15	Women's Breakfast at Cowan's		9 a.m.
October 13	Plow Share	Finger Food	
October 20	Women's Breakfast at Cowan's		9 a.m.
October 27	Holstein		
November 10	Linda Becker Honor Flight Film		pot luck
December 1	9 a.m. Homecoming Movie		Pizza lunch and meeting to follow
December 10	Cookie Sale		
December 15	Women's Breakfast at Cowan's		9 a.m.
January 12	Bible Study	Sack Lunch	
January 19	Women's Breakfast at Cowan's		9 a.m.

The Prayer Network Ministry Team

The Prayer Network Ministry Team will meet on March 2 at 10 a.m. All are welcome both to join us as a caller and also to call the church office at 636-239-6176, Dorothy, or Marge with any prayer concerns or requests for yourself or others. For more information, call Dorothy Althage at 239-3574 or Marge Jones at 239-7752.

A Thought: "In prayer, it's best to begin at the beginning - which is exactly where we are at all times."

Submitted by,
Dorothy Althage

St. Peter's is now using digital printing and is capable of being able to print pictures in the newsletter from pictures taken with your digital camera. We are asking all of you who have the ability and willingness to take digital pictures while attending any events at or concerning St. Peter's church or members to do so when convenient. Please forward them to lplicht@fidnet.com for use in the monthly newsletter and also on the website. Thank You

Quilting News

From the Quilters

There is still a backlog for quilting... But!!! Considering the weather etc., we are trying to keep up. We could still use new quilters...and remember we are willing to teach.

We are preparing a basket for Mardi Gras on March 6. There is also a fall charity quilt in the frame at this time. It will either go to the Emmaus Bazaar or to the Festival of Sharing.

Quote for March: "Of all the things you wear, your expression is the most important."

Unknown

Submitted by, Judy Eickmeyer and the Quilters

Adult-High School Class Journeys with Jesus

We welcome any members and friends to join us as journey from Galilee to Jerusalem with Jesus. As followers of Jesus we will move into our Lenten season, a time for us to grow in faith and service. We will be discussing Bible narratives that can help us apply Jesus' way of life to our own lives. These open discussions foster acceptance of questions as well as deepening of faith. The Scripture readings we encounter are the same as the Bible readings used in our Sunday morning worship,

We meet in the lower level Atrium room from 9 to 9:45 am each Sunday. On the second Sunday of each month, past and present class members go to a restaurant for lunch following our 10 am worship. Family and friends also are welcome to join us. Our next lunch will be Sunday, March 13.

John Nourse

Food Pantry Report

January's bad weather did not keep clients from coming to the pantry for food. Even though the pantry was closed several days because of ice and snow, we were still able to serve 58 families. We have many people to thank for donations in January. Thank you to: Joline Logan, Jim and Hazel Schaffner, Mel and Betty Edwards, Thanksgiving Day Committee, Don and Phyllis Northington, Jim and Ruth Konrad, Franklin Co. Public School Retirees, Fifth St. School, YMCA Yoga Class, Tom and Carol Buescher, and Magnet. We also want to say a special thank you to the fourth and fifth grade Sunday School class for their pancake breakfast. The students,

teachers, and parents did an excellent job fixing breakfast. They had a large crowd and were able to raise over \$600 in cash and collected over 70 jars of peanut butter and jelly. We appreciate their hard work. I have one request. We are running low on plastic grocery bags. If you have any to donate, please leave them by the pantry door. Thank you to everyone for your support, and thank you to all of our dedicated volunteers.

Judy Schneider
Food Pantry Coordinator

Monthly Minders

Communion is served the first weekend of each month.

The first weekend of the month is the food pantry collection.

The first weekend of the month is the aluminum can collection.

The MPS (Merchandise Pickup Service) Box is in the parking lot.

Schnucks escrip cards - inquire at Schnucks for more information.

Sign up for altar flowers and /or bulletins by the Market Street hallway doors.

If you are hospitalized and want the pastors to know, please call 239-6176.

Please don't assume the pastors know about your health concerns or need for a visit.

Financial Report 1/31/11

Financials	Atrium Fund as of 1/31/11
Heritage Community Bank Balance	\$860,591.37
Monthly Payment	\$5,950.00
Promissory Notes Balance	\$7,000.00
Rott Foundation Loan Balance	\$28,847.89
Quarterly Payment	\$4,204.69



General & Benevolent Fund:	January	YTD	2011 Budget	% Budget Reached
Total Receipts	28,403.08	28,403.08	387,966	7.32
Total Disbursements	32,359.83	32,359.83	424,748	7.62

March Birthdays

Sun	Mon	Tue	Wed	Thu	Fri	Sat
		1 Richard Speckhals	2 Mason Coffman Jason Fox	3 Steven Sentivany Christina Sehr Taylor Schroeder	4 Bondie Heidmann Mary Ann Carey Steve Hausmann Brooke Owens	5 Mary Lou Tyree Susan Newman Diane Overschmidt Todd Geisert
6 Ralph Goebel	7 Nora Colter	8 Diana Scharringhausen Julie Frankenberg Michael Jinkerson	9 Linda Filer Elizabeth Fleeer Kristin Koch	10 Rosalie Benne Daniel Sample Russell Smith Angela Kast Matthew Buddemeyer Amaya Beck Caroline Heimos	11 Lucille Homeyer Mary Mense William Scharringhausen Kimberly Schroeder Nichola Elsenrath	12 Carrie Clover Lindsey Jackson
13 Ruth Pehle	14 Doris Sleeman Laurie Kleekamp Clayton Duchatschek	15 Ludell Rettke	16 Michael Neubert	17 Betty Eckelkamp Joan Hamlin Denise Mesle Mason Wahl	18 Jo Ann Smith Travis Norvell Courtney Brinkmann	19 Frederick Hodgson Donald Langkopf Suzon Pogue Judy Verdine Jason Firsick Annelise Obermark
20 Mark Wood Alan Kleekamp Kris Moran Emily Kuenzel Jordan Krafft	21 David Hausmann Vickie Brand Clinton Epple	22 Melba Schwentker Weston Langford	23 Barbara Wiley Philip Butler Ervin Ebker Kodi Gildehaus Brandon Schaffer Calvin Obermark Abbey Jinkerson	24 Jean Kleekamp	25 Randi Bub	26 Kenneth Stolte Thomas Sherman
27 Ron Miklos Carol Buescher Kaitlyn Tobben Chloe McCarthy	28 Susan Anderson Karen Nassif	29 Barbara Armstrong Tammie Buschling Tammy Smith Jamie Bilinski	30 Alan B. Buschman	31 Patricia Winfree		

Missouri State Sacred Harp Singing Convention

Where: St. John's United Church of Christ, Pinckney Township, Missouri near Marthasville

When: Saturday and Sunday, March 12-13, 2011

Time: 9:30 a.m. to 3:00 p.m.

Dinner on the Grounds at noon

Everyone is welcome - singing experience is not required! No admission fee: Free-will donations or offerings are accepted.

We will sing from the 1991 Denson version of *The Sacred Harp* and from *The Missouri Harmony*. We have loaner books as well as books and recording for purchase.

Local Attendees: Please bring food to share. We have the privilege of hosting many out-of-town guests, and need your generous help to provide hospitality.

Singers are invited to the Saturday evening social. Maps/directions will be provided at the singing.

For more information: Please visit our website at www.stlfasola.com. You may also contact Paul Figura (314-962-4870, stlfasola@mindspring.com) or Anne Drexler (314-962-3344, tycin@aol.com).

St. Peter's Men's Retreat at Shannondale

When: April 15-17, 2011

Where: Shannondale Tree Farm and Retreat Center, Shannon County, Missouri

Who: Men from ages 14 and up - Our group will be joined by men in other groups

Why: 1.) Spiritual Growth 2.) Fellowship 3.) Recreation and Fun 4.) Great Eating
5.) Service to the Shannondale community 6.) Opportunity to recharge

Cost: \$60 per person - Includes Lodging and Food - Please contact Pastor Paul at 636-221-7065 or pk24601@yahoo.com

About Shannondale: Shannondale Retreat Center is a Mission project of the Missouri Mid-South Conference UCC serving the spiritual, educational, and economic needs of Shannon and the surrounding counties through its many functions. Shannondale also encompasses the Bucher Memorial Tree Farm, the oldest continuing tree farm in the state of Missouri. The tree farm illustrates our continuing commitment to God's land and its resources. The Wobus Crafts Center was established to serve as an outlet for local artisans to supplement their incomes. The center features baskets, woodwork, quilts, and other handmade items. Shannondale provides varied lodging arrangements for families and groups on service projects, work camps, or retreats.

Shannondale is about 40 miles south of Rolla, MO, near the Ozark National Scenic Riverway.

Lodging: Dormitory-style air-conditioned bedrooms. Please bring your own bedding and pillow.

Camp sites with and without electrical hook-ups are available.

Meals: Meals will be family style

Work Projects: Work projects will depend on the number of men and the skills of the men attending. Please let Paul know what specific skills you can provide.

Men's retreat at Shannondale Schedule of events:

Friday - April 15 Drive down to Shannondale. Car pools are encouraged for safety and fellowship. Arrive at Shannondale - Get familiar with the location and the other men at the Orientation meeting.

Saturday - April 16 Hearty Breakfast, 8-12 Work projects at Shannondale, Lunch

Afternoon Activities: Canoeing on the Current River - Extra Cost - \$20 per person,

Hiking, Golf - Extra Cost, volleyball, wiffleball, enjoying the outdoors, relaxing and conversation

Program/Evening Campfire/ Star gazing/ Conversation

Sunday - April 17

Breakfast, clean up, church service at Shannondale UCC, head back home

Remembering with Purpose & Gratitude...

The congregation's Memorial Fund, Atrium Fund and various other funds receive gifts throughout the year from both members and nonmembers who are looking for a creative way to express their gratitude for the life of a friend or loved one, or for other times and occasions when they are moved to gratefully respond to a blessing of God.

In memory of **Toni Dembeck**: Charles & Carole Sincox

In memory of **Alice Lindauer**: Charles & Carole Sincox

In memory of **Ralph Jones**: Charles & Carole Sincox

In memory of **Laura Gephardt**: Charles & Carole Sincox

In memory of **Lucy Heidmann**: Robert E. Hansen, Carole & Charles Sincox

In memory of **Joan Heisel**: Charles & Carole Sincox

In memory of **June Siedhoff**: Cecil & Doris Blankenship, Hank & Sue Anderson, Cara Czeschin, Sally & Gary Mades, Carole & Charles Sincox

In memory of **Harry & June Siedhoff**: Cliff & Tish Mueller

In memory of **Edward Kruse**: Warren Viele, Donald & Eileen Cognata, Carole & Charles Sincox, Bill Schuck on behalf of Exceptional Equestrians, Gary & Sally Mades, Diane & Jim Gephardt, EZ Care Systems Inc., Rainbow Activity Center, MACDDS (Sedalia), SIMV, Inc., Developmental Services of Franklin County, Franklin County Transportation Council, Ken, Nancy, Michael & Brian Kruse, Bill & Kathy Miller, Billie Ruth Miller, Russell & Phyllis Graff, Bob Engemann, Temco, Inc., Claire Simon

In memory of **Opal Menke**: Charles & Carole Sincox, Dorothy & Robert Brinker Family, Diane & Jim Gephardt, St. Peter's UCC Women's Fellowship, Richard & Rosemary Hirschl, Julie & Rick Frankenberg, Kirk & Cindy Kriete, Dorothy & Glen Meyer, Wally & Charlene Schatz, Corine Ebker

In memory of **Bob McDonald**: Fred & Marion Hodgson, Doris & Cecil Blankenship, Hank & Sue Anderson, Larry & Brunhilde Wahl

In honor of **Linda Miller**: St. Peter's UCC Women's Fellowship

In memory of **Pauline DeRidder**: Gene & Kay Hunt

In memory of **Larry Wahl**: Cecil & Doris Blankenship, Jeanette & William Hanneman, The King Family, Carol Muench, Dixie Kottwitz, M/M Ray Marquart, Anna Mae Boehmer, Judy & Ray Eickmeyer, M/M Larry Bonnet, B.J. Johnson, M/M Keith Chrastowski, Billie Ruth Miller, M/M Bud Stolte, Agnes Meyer, M/M Richard Hirschl, Robert Vossbrink, Jr., Don & Doris Jacob, Dutch & Delores Borcharding, Tim Filla, Greg & Helga Alexander, Tim & Gerry Urban, Mike & June Holt, Ursula Wallmeier, Robert Meyer, M/M Bill Koenig, M/M Paul Czeschin, Gladys & Robert Findlay, Jim & Jackie Krafft, Randy & Dorothy Meyer, Mike & Joette Maune, Donna Geisler, Alice Fleisch, Elmer Allemann, Kevin & Judy Obermark, Jane Filla, Keith & Jeanne Unnerstall, Jon & Barb Bauer, Russel & Marilyn Sherman, Laurie Freie, Steve Holzem, Wayne & Mary Dothage, Ray & Mary Shipley, Mark Trebacz, Norma Renick, M/M Michael Wahl, Janice Wahl, Christopher Wahl, M/M Jim Kerr, M/M Lee Adams, Theresa & Ron Wilson, Robert & Helen Goebel, Vernon & Ruth Steinberg

In memory of **Leonard Figas**: Kim Colter & Elaine Menke

In memory of **Nicholas Salko**: Richard & Rosemary Hirschl, Rosemary Cassidy, Janice Bolm, Merle Kuid

In honor of the wedding anniversaries of **Wally & Charlene Schatz and Perry & Joyce Schatz**: Wally & Charlene Schatz

In memory of **Judy Sedivy**: Ruth Buddemeyer

In memory of **Gustav & Alvina Meyer**: Mrs. KL Church

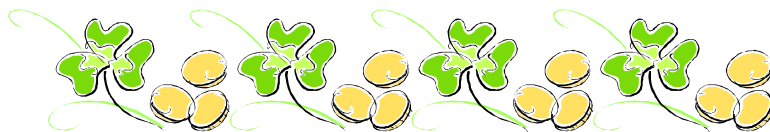
In honor of **August & Lucille Homeyer**: Mark & Susan Kassebaum & Family, Jenny & Tim Huellinghoff & Family

Honoring the 50th Wedding Anniversary of **Howard & Judy Althage**: St. Peter's UCC Women's Fellowship

In memory of **Marian Lefmann**: Cecil & Doris Blankenship, Richard & Rosemary Hirschl, Bill D & Kathy Miller, Jim & Diane Gephardt, Billie Ruth Miller, Dutch & Delores Borcharding, Hank & Sue Anderson,

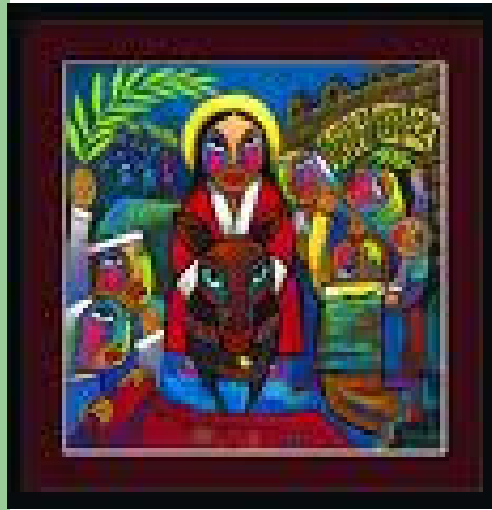
Thelma Lucy, Frankie Jo & Tom Hogan, Joline Logan, Russel & Marilyn Sherman, M/M Don Means, Anita Jaeger, Colleen Ryker, Ruth Avery, Lorene Brinker, Annette Horn, M/M Dave Sentivany, Ruth Buddemeyer, Carrie Clover, Ronald & Lisa (Beste) Mayer, John Alfermann, Don & Darlene Langkopf, Tom Lefmann, Alex & Carrol Ocsody, St. Peter's UCC Chancel Choir, Levere & Kathryn Barnett, Jim & Kris Wessler

In memory of **Mildred Woodruff**: St. Peter's UCC Women's Fellowship



These three paintings by He Qi,
used with U.C.C. permission

St. Peter's United Church of Christ presents:
A Lenten Bible Study on...



The Last Week: A Day-by-Day Account of Jesus' Final Week in Jerusalem

AT ST. PETER'S UNITED CHURCH OF CHRIST, 5TH AND MARKET STREET

WEDNESDAYS
FROM 12:00 TO 1:00 PM

Dates:
March 2, 9, 16, 30 and
April 6, 13

Rev. Leah Atkinson Bilinski
636-239-6176
pastorleah@stpeters-ucc.org

The last week of Jesus' life is a week of great importance for Christians. Often we miss it, hurrying from Palm Sunday to the cross to Easter and losing the capacity to grasp the full meaning of it all. In this six-week study, we will journey through Jerusalem with Jesus, seeking to better understand how his passion of life led to his passion/suffering and death. We will focus on scripture with the help of commentary by Marcus J. Borg and John Dominic Crossan.



2011 CAMP SCHEDULE: "Got Spirit?" Finding God in the Everyday

Please Note: It is important to the experience of Christian community we strive for in all of our camping programs that campers plan to attend the full session for which they are registered. Please consider this when selecting your session(s). This year fees **INCLUDE T-shirts and camp photos!**

		BEST DEAL	
		<u>On or Before 5/2</u>	<u>(After 5/2)</u>
CAMPS for YOUNGER CHILDREN			
1.	June 12-14 (grades 1-2)	Discovery Camp Mimi Anderson & Melinda Schuster	\$160 (\$171)
2.	June 15-18 (grades 2-3)	Primary Camp Mimi Anderson & Susan Solsten	\$183 (\$198)
3.	July 10-16 (grades 3-4)	Lower Junior Camp Dana Buchanan & Mark Miller	\$360 (\$390)
CAMPS for YOUNGER and OLDER CHILDREN TOGETHER			
4.	June 19-25 (grades 3-5)	Junior Camp Karin Oelzen	\$360 (\$390)
CAMPS for OLDER CHILDREN			
5.	June 26-July 2 (grades 4-6)	Upper Junior Camp Rev. Betsy Happel & Rev. Chris Ross	\$360 (\$390)
6.	July 10-16 (grades 5-6)	Outback (G56) Rev. Brad Urban	\$360 (\$390)
7.	July 17-23 (grades 4-6)	Upper Junior Camp Rev. Carole Barner & Rev. Rick Oberle	\$360 (\$390)
CAMPS for YOUTH			
8.	June 1-4 (ages 17-18)	Campers in Leadership Training Rev. Leah Bilinski	\$180 (\$195)
9.	June 12-18 (age 15-17)	Campers in Leadership Training CILT Leadership Team	\$360 (\$390)
10.	June 26-July 2 (grades 7-8)	Outback (G78) Melanie Moehmann	\$360 (\$390)
11.	July 3-9 (grades 9-12)	High School Camp Dawn Henerfauth & Delaine Young	\$360 (\$390)
12.	July 10-14 (grades 8-10)	Canoe Camp @ Shannondale Sponsored by Shannondale Community Center Please Register directly with Shannondale	\$360 (\$390)
13.	July 24-30 (grades 6-8)	Middle School Camp Rev. Polly McWilliams & Rev. Joe Rowley	\$360 (\$390)
OTHER CAMPS			
14.	May 27-30 (all ages)	Family Camp Phil Barbier & Melissa Dooley	rates vary* as below
15.	June 5-10 (age 18+)	Age 16 - Adult = \$160, Age 10-15 = \$137, Age 4-9 = \$112, Age 3 and Under = Free [* please add \$8 per person to fee for Registrations after May 2] Adventures in Community #1 A Camp for Adults with Special Needs - Separate Registration Required	\$360 (\$390)
16.	August 14-19 (age 18+)	Adventures in Community #2 A Camp for Adults with Special Needs - Separate Registration Required	\$360 (\$390)

► The Best Deal in the Conference? REGISTER on or before **MAY 2nd!** (Fees increase after May 2.)
 ► All grades LISTED are the grade COMPLETED by this summer.
 ► All camps will be held at Camp Mo-Vol, unless otherwise noted above or below.
 ► All Fees INCLUDE T-Shirts and Photos this year!

SPECIAL EVENTS @ SHANNONDALE: CANOE AND KAYAK CAMPS

June 13-16 (age 19+)	Kayak Camp	FOR EACH OF THESE CAMPS: Please Register Directly with Shannondale Community Center HC 62, Box 340, Salem, MO 65560 Office Phone: (573) 858-3284
June 27-30 (age 19+)	Kayak Camp	
#July 10-14 (grades 8-11)	Canoe Camp	

Weds@St.Pete's
 Begins Wednesday, March 16
 And last five weeks (through April 13).
 See upcoming bulletins for information on Christian Education classes
 For all ages!

Missouri Mid-South Conference Women's Retreat
 April 29-May 1 at Camp Mo-Val
 (registration deadline April 1)
 "Grace in Your Face" sponsored by Kirkwood U.C.C.
 For information, please pick up a brochure in the entryway
 outside the church office

St. Peter's,
 I wanted to thank you for the wonderful pies that were made for the KC Fish Fry benefit last Friday. They served over 625 dinners and we couldn't have done it without your help. Emmaus Homes is blessed to have the support of our churches in partnering to provide the services and supports that we do. Thanks for being a part of this vital ministry and thanks too to all who attended!

Most sincerely,
 Dennis Kramme

Easter Lily Order Form

If you wish to place an Easter lily or memorial, please complete this form and return it to the church office no later than April 18, 2011.

Name: _____ Phone: _____

I would like to make a contribution to:

Memorial Fund \$ _____

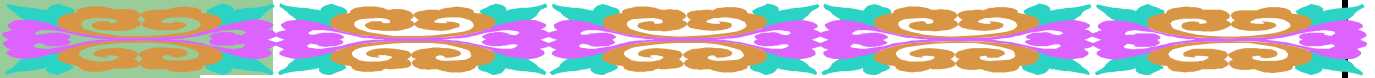
Atrium Fund \$ _____




I would like to provide an Easter lily. _____ (Note: Call an area florist no later than April 15 to place an order to have the plant delivered to the church on Friday, April 22.)

In memory of: _____

Plants not picked up by noon April 27 will be delivered to shut-ins.



March 2011

Sun	Mon	Tue	Wed	Thu	Fri	Sat
		<p>1 9 AA 10:30 Staff Mtg. 7 Social Concerns 7 Cemetery Bd. 7 BCE 7 EA Council</p>	<p>2 Quilting 9 Retired Men at Bob Evans 10 Prayer Network 12 Bible Study 6 AA 6 Chapel Bells 6:45 Vesper Bells 7:30 Chancel Choir</p>	<p>3 6 AA 6 Men of the Church Banquet</p>	<p>4 11-7 Stew Super 7:30 World Day of Prayer Service at Borgia</p>	<p>5 5 Worship 5-6 Harvest Table</p>
<p>6 9 Adult Study 10 Worship Sunday School Food Pantry and Aluminum Drives 11 Coffee Hour 11 Mardi Gras All-Church Party</p>	<p>7 6 AA 6:30 Quilting</p>	<p>8 9 AA 10:30 Staff Mtg. 5:30 Mariners 6 Bldgs & Grds. 7 Stewardship</p>	<p>9 <u>Ash Wednesday</u> Quilting 12 Bible Study 5:30 Chancel Choir 6 Ash Wed. Ser. 6 AA 7 Vesper Bells</p>	<p>10 10 Women's Fellowship 6 AA</p>	<p>11 1-8 Scout Blood Drive</p>	<p>12 5 Worship 5-6 Harvest Table</p>
<p>13 9 Adult Study 10 Worship Family Sunday 11 Coffee Hour 6:30-8 High School Youth Group</p>	<p>14 6 AA 6:30 Quilting 7 Bible Discovery</p>	<p>15 9 AA 10:30 Staff Mtg. 2 Historical Com. 2:30 Cedar Crest 7 Church Council</p>	<p>16 Quilting 12 Bible Study 6 AA 6 Weds@St.Pete's 6 Journeymen 6 Chapel Bells 6:45 Vesper Bells 7:30 Chancel Choir</p>	<p>17 St. Patrick's Day 9 Women's Breakfast @ Cowan's 10 Grandview 6 AA</p>	<p>18 8 pm High School Youth Lock-In</p>	<p>19 8 a.m Lock-In Ends 5 Worship 5-6 Harvest Table 6 Game Night</p>
<p>20 9 Adult Study 10 Worship 11 Congregational Mtg. 10 Sunday School 11 Coffee Hour</p>	<p>21 9 Newsletter articles due 6 AA 6-8 MS Support Group 6:30 Quilting Pastor Leah gone through March 28 for vacation</p>	<p>22 9 AA 10:30 Staff Mtg.</p>	<p>23 Quilting No Bible Study 6 Weds@St.Pete's 6 AA 6 Chapel Bells 6:45 Vesper Bells 7:30 Chancel Choir</p>	<p>24 6 AA 6:30-8 Scout Pack</p>	<p>25 5 Wedding Rehearsal</p>	<p>26 2 Wedding 5 Worship 5-6 Harvest Table</p>
<p>27 9 Adult Study 10 Worship Sunday School 11 Coffee Hour</p>	<p>28 6 AA 6:30 Quilting</p>	<p>29 9 AA 10:30 Staff Mtg.</p>	<p>30 Quilting 12 Bible Study 6 Weds@St.Pete's 6 AA 6 Chapel Bells 6:45 Vesper Bells 7:30 Chancel Choir</p>	<p>31 6 AA</p>	